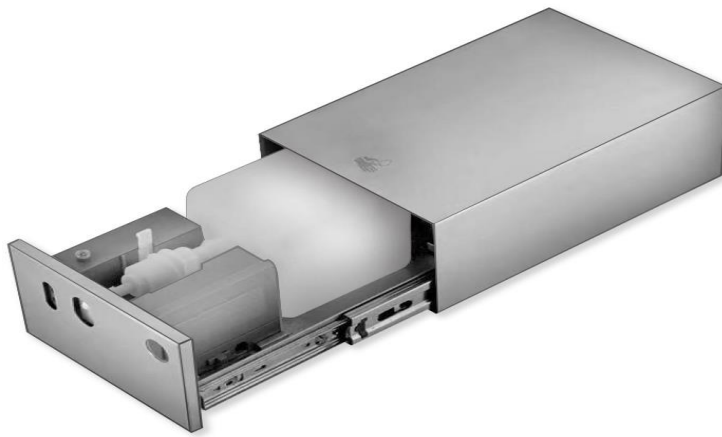


INSTALLATION AND OPERATION MANUAL

Prestige Automatic Soap Dispenser Behind Mirror 1000ml

Prestige Behind Mirror Mounted soap dispenser activated by a reliable infrared sensor when users place their hands within 5 - 150mm range. As it is a touch-free dispenser, preventative when it comes to germs and cross-contamination. The pump will dispense a wide range of liquid soap and gels within a viscosity range 1~500mPa.S. This dispenser also has a low energy power consumption and if there is no power source available, the dispenser can be operated with 4 x 1.5V Batteries.



Product Features

1. The overall outer casing of the dispenser is made from 304 grade stainless steel.
2. The upper and lower guide rails are made from high quality galvanised copper plate. This ensures a firm structure and smooth operation of guide rails and long service life.
3. No need to open mirror or cupboard, dispenser simply drops down for re-filling of liquid soap
4. 1000ml Automatic soap dispenser is controlled by a high quality digital circuit
5. AC power adapter with UK plug supplied
6. Option to use 4 x 1.5V DC batteries, if power source is not available (not supplied)
7. Infrared automatic soap dispensing, factory setting distance 8cm
8. Dispensing any liquid soap or gel with a viscosity 1~500mPa.S
9. Low energy drive circuit 3W
10. Back plate with 2 x wall fixing holes for easy installation see diagram

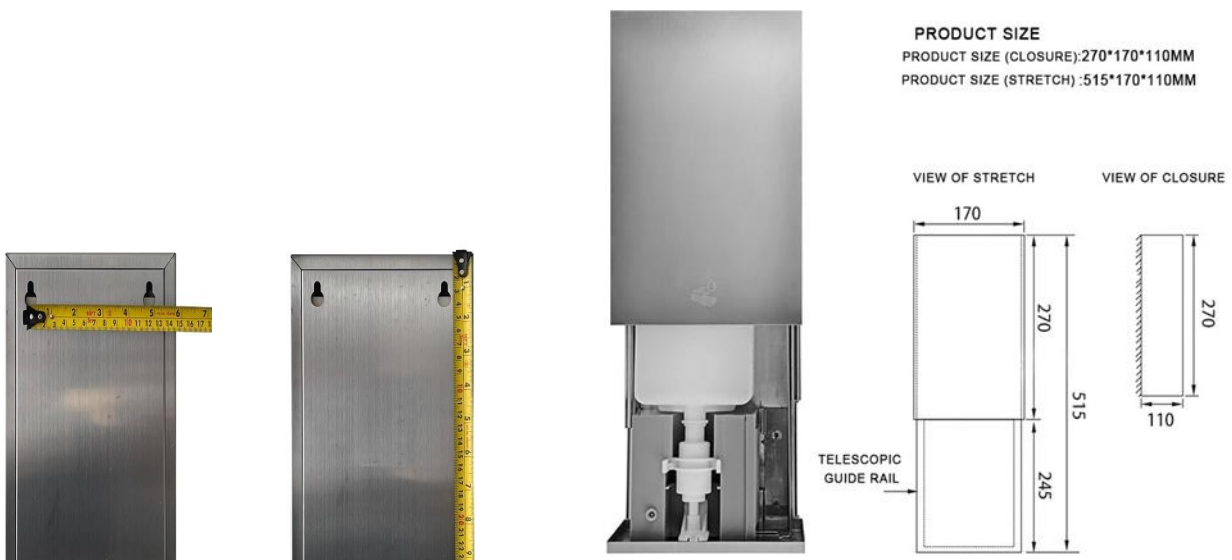
INSTALLATION AND OPERATION MANUAL

Attentions

1. To avoid any mis-operations, please ensure there is a minimum of 300mm (12") distance below the sensor and any moving objects below
2. The bottom of the dispenser should not be installed in places where direct sunlight and or above reflective objects
3. Prevent objects from contaminating the soap that could potentially block the tank and pump
4. Do not use water directly on the body of the machine to avoid water contamination of the circuit board
5. Regular cleaning of the soap container and pump is required. When removed from the machine use warm water only to flush through and clean the tank and pump. Old soap can start to congeal - harden over long periods of time
6. The sensor situated on the underside of the dispenser has a protective cover. This cover should not be cleaned with any abrasive materials. Please use a soft cloth to clean. If the sensor cover is scratched or damaged, this will prevent the sensor from working

Installation and Operating Methods

1. Please use the fixing installation for behind mirror or cupboard dimensions below
2. There are 2 x fixing holes on the back of the dispenser 120mm apart, 40mm from the top. The dispenser is simply hung onto fixed wall screws
3. The maximum depth of this dispenser is 110mm, therefore ideal for limited spaces



INSTALLATION AND OPERATION MANUAL

4. 2 x Power options: 4 x 1.5V batteries or the AC power supply provided.



5. If AC power supply is used, the power cable can be inserted through the top right hand side of the machine shown below. Thread the power cable through and connect below the battery compartment as shown above. Remove the soap tank for easy access of refilling



6. The AC power cable is 1.8m in length, however please allow 500mm to be stored inside the machine compartment to allow the guide runner free movement.
7. With the machine fully open and the power cable connected, tape the power cable inside at the top of the compartment, this will prevent the cable from being pulled or damaged when dropping the dispenser for filling.
8. Fill the soap tank with liquid soap, then insert the tank back into the housing. Switch on the power supply and test the sensor to ensure the soap is being dispensed.
9. The automatic soap dispenser ready for use

INSTALLATION AND OPERATION MANUAL

Product Code	PBMAC601S
Capacity (ml)	1000
Bulk Fill	Yes
Alcohol Hand Sanitizer	Yes - 1~500mPa.S
Liquid Soap	Yes - 1~500mPa.S
Grit Soap	No
Foam Soap	No (Version Available)
Sensor Operated	Yes (8cm)
Finish	304 SS
Power	4 X 1.5V Batteries or AC DC 6V transformer
Height x Width x Depth (mm)	270 x 170 x 110
Waterproof	IPX4
EAN	5060819137729

