



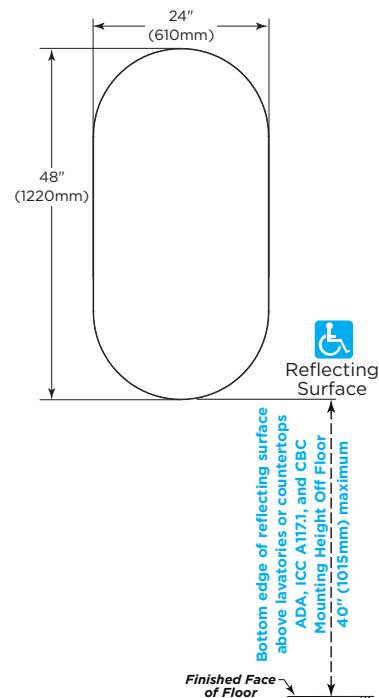
Technical Data

PILL SHAPED MIRROR, MATTE BLACK

B-105

STANDARD B-105 MIRROR

OVERALL SIZE		
MODEL NO.	W	H
B-105 2448.MBLK	24" (610mm)	48" (1220mm)



Installation Guidance

Maximum mounting height bottom edge of reflective surface above lavatories and countertops:

ADA, ICC A117.1 and CBC: 40" (1015mm) above finished floor (AFF)

*For more information regarding mirror mounting heights, please refer to Bobrick Planning Guide for Accessible Restrooms, page 9 and 15.

MATERIALS:

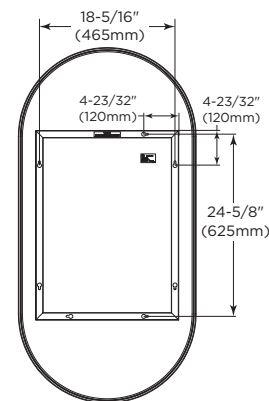
Frame — Stainless Steel, Matte Black.

Glass — 0.19" (5mm) thick safety mirror with 0.14mm film backer with frosted sandblasting.

Extruded Back — Aluminum channel with mounting holes.

INSTALLATION:

Install mounting screws into pre-marked holes. It is highly recommended that all mirrors be installed in contractor supplied blocking, however, drywall anchors may be used if no blocking is available. For added safety, Bobrick recommends the 55-1/8" x 25-5/8" (1400 x 650mm) or larger back-lit mirror only be installed in blocking. If blocking is not available, drywall toggle bolts (not provided) should be used.



SPECIFICATION:

Mirrors shall have a matte black stainless steel frame. Reflective surface shall be 3/16" (5mm) thick and covered with a 0.14mm PVC film backer with frosted sandblasting. Lead free silver backing shall exceed ISO 9227:2012 and exceed 120-hour corrosion testing. Aluminum mounting panel shall contain key hole slots both top and bottom to provide easy installation and prevent the mirror from pulling away from the wall.



Framed Mirror shall be Model B-105 _____ (insert width and height) of Bobrick Washroom Equipment, Inc., Clifton Park, New York; Jackson, Tennessee; Los Angeles, California; Bobrick Washroom Equipment Company, Scarborough, Ontario; Bobrick Washroom Equipment Pty. Ltd., Australia; and Bobrick Washroom Equipment Limited, United Kingdom.