

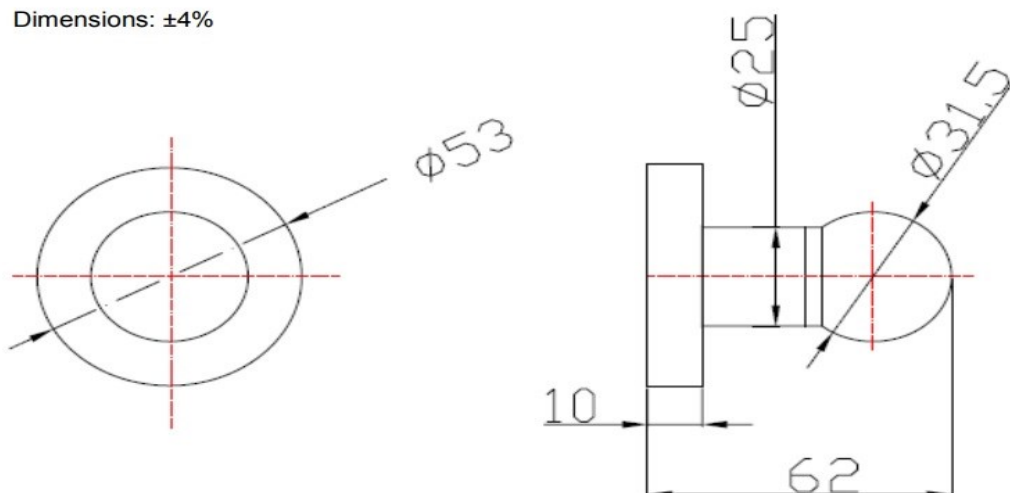


## Prestige Chrome Plated Brass Washroom Hook

# AC0966C



Dimensions:  $\pm 4\%$



**Materials:** Constructed from chrome plated brass. **HOOK:** spherical  $\varnothing 31.5$  mm, made of chrome-plated brass bright finish, 1 mm thick and a protective layer of nickel  $9.4 \mu\text{m}$  + chrome  $0.40 \mu\text{m}$ . **POST:** made of chrome-plated brass bright finish  $\varnothing 25$  mm, 1 mm thick and a protective layer of nickel  $9.4 \mu\text{m}$  + chrome  $0.40 \mu\text{m}$ . **SNAP FLANGE COVER:** made of chrome-plated brass bright finish,  $\varnothing 53$  mm. It has a concealed mounting bracket which incorporates 3 screws holes of  $\varnothing 5$  mm for wall-mounting.

**Mounting:** With three supplied screws through the 3 screw holes of  $\varnothing 5$  mm located into the concealed mounting bracket.

**Specification:** Prestige Washroom Hook is to be constructed from chrome plated brass. The unit will project 62mm when installation has been done correctly. Mounting flange shall be 53mm diameter.

Prestige Radiators Ltd

Unit 2, North Point Business Park, Selby Road, Eggborough, DN14 0JT

The illustrations and descriptions herein are applicable to production as of the date of this Technical Data Sheet.

We reserve the right to make changes and improvements to the design and dimensions.

Revised 21st September 2017

© Prestige Radiators Ltd