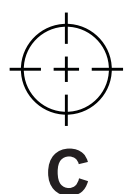
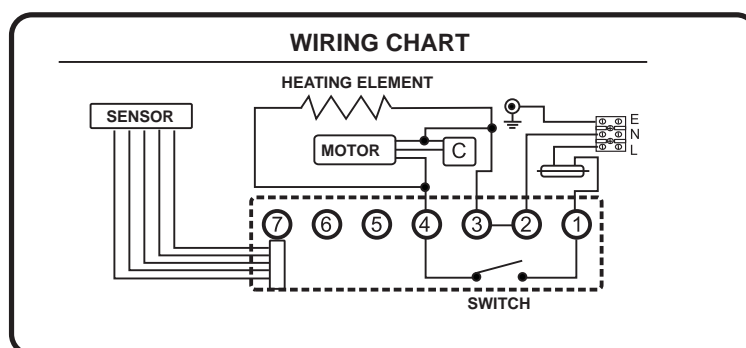
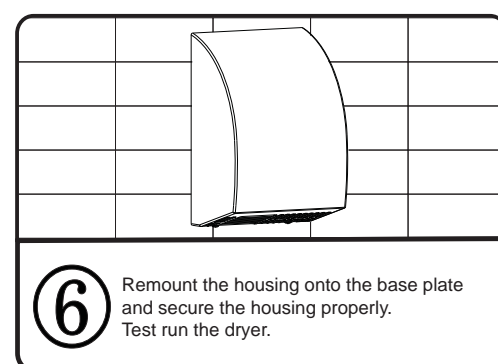
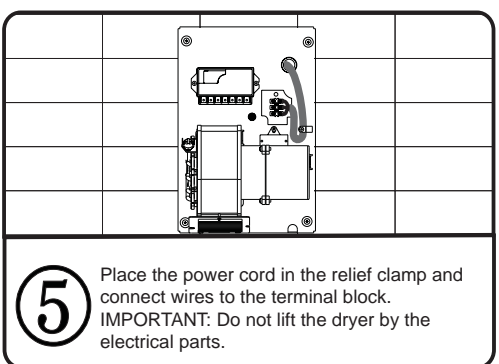
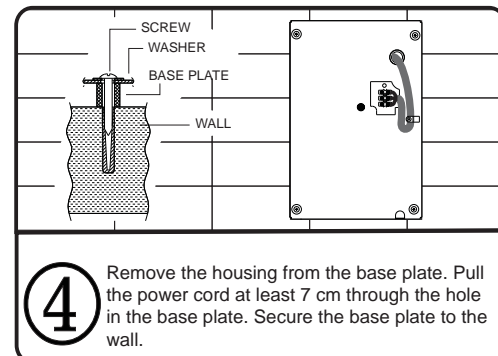
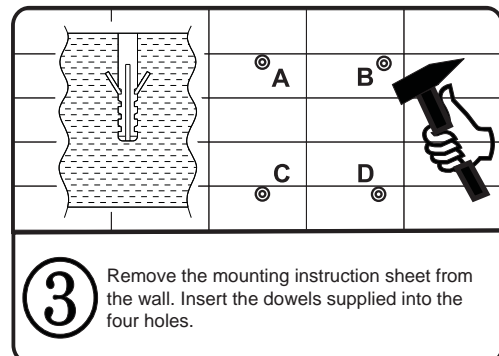
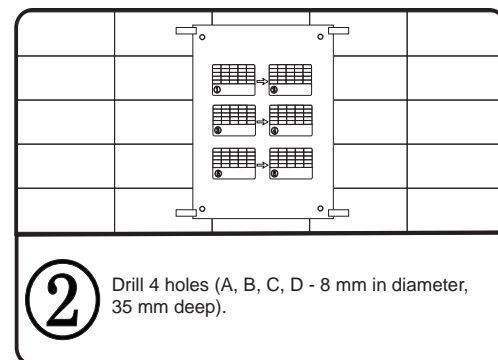
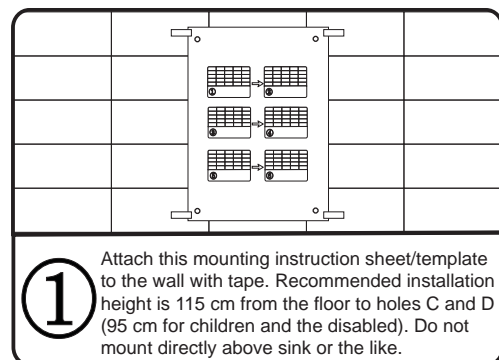


MOUNTING INSTRUCTIONS / TEMPLATE

THE DRYER MUST BE PROPERLY EARTHED.
FOR FIXED INSTALLATION, CONNECT VIA CIRCUIT BREAKER.



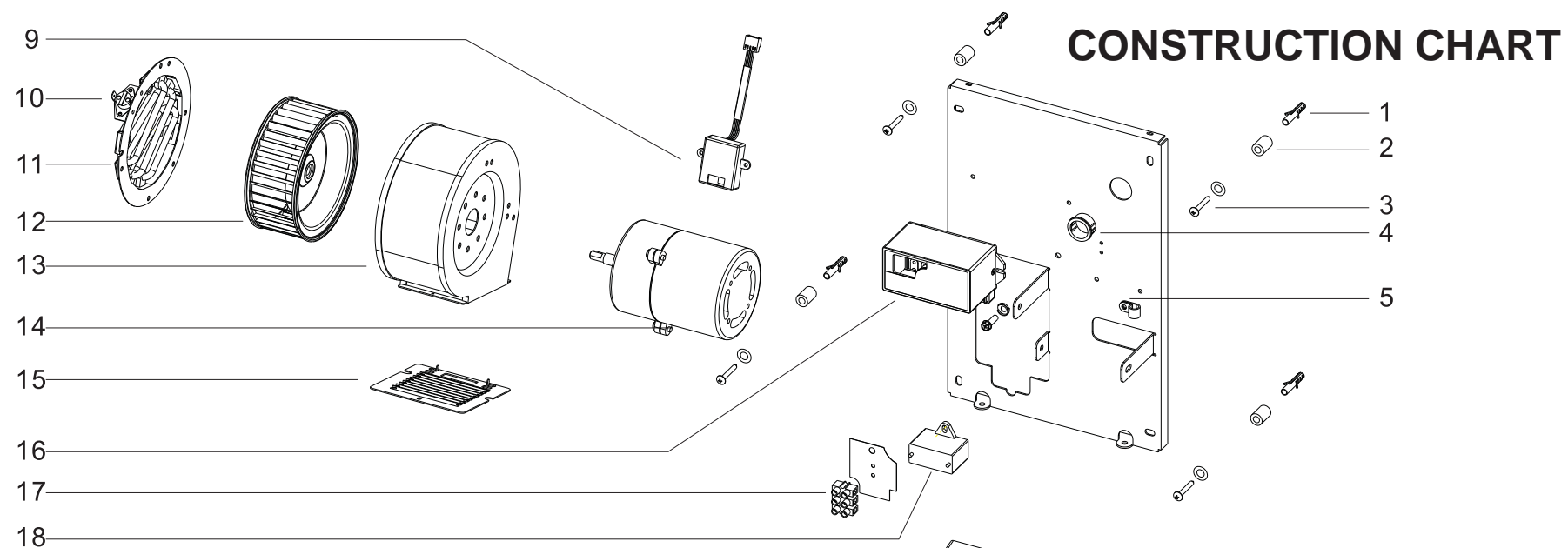
RECOMMENDED INSTALLATION HEIGHT:
115 CM FROM THE FLOOR FOR ADULTS / 95 CM FOR CHILDREN AND THE DISABLED.

IMPORTANT! This product is covered by the WEEE regulations on the recycling and recovery of waste electrical and electronic equipment.

- This products is not to be treated as household refuse.
- This product must be recycled if possible.
- Contact local authorities for advice.
- The product may also be returned to the manufacturer/distributor free of charge. The manufacturer/distributor will ensure proper recycling/disposal.

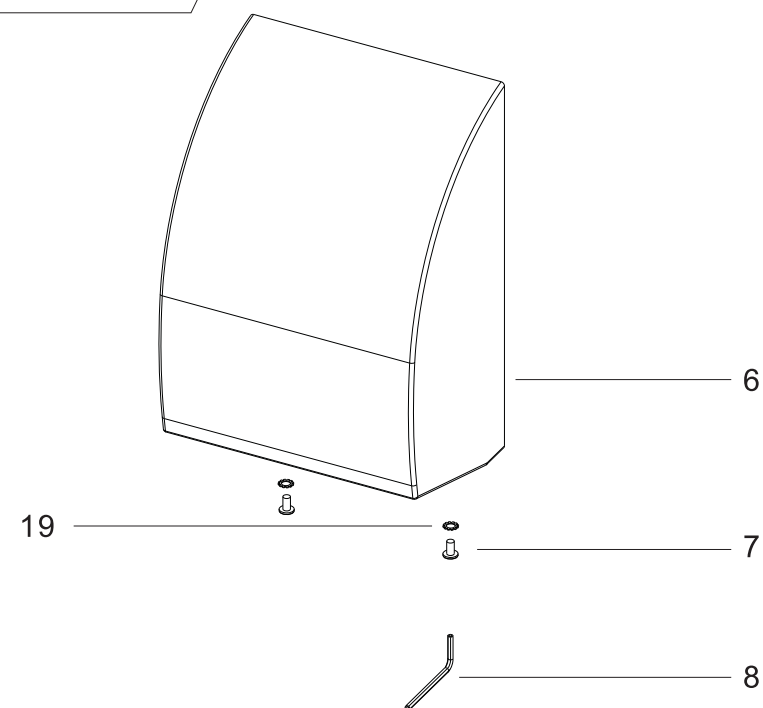


289 mm



SPARE PARTS LIST DAN DRYER MINI STAINLESS

| No. | Description | Qty. |
|-----|-------------------------------|------|
| 1 | Dowel | 4 |
| 2 | Spacer | 4 |
| 3 | Screw for base plate mounting | 4 |
| 4 | Bushing | 1 |
| 5 | Tensile relief clamp | 1 |
| 6 | Housing | 1 |
| 7 | Screw for housing | 2 |
| 8 | Allen key | 1 |
| 9 | Sensor | 1 |
| 10 | Thermostat | 1 |
| 11 | Heating element | 1 |
| 12 | Fan | 1 |
| 13 | Fan housing | 1 |
| 14 | Motor | 1 |
| 15 | Air outlet grille | 1 |
| 16 | Timer | 1 |
| 17 | Terminal block | 1 |
| 18 | Capacitor | 1 |
| 19 | Tooth lock washer | 2 |



DAN DRYER
DK-8920 RANDERS NV - DENMARK
Tél.: +45 86 41 57 11 - www.dandryer.com