

# TECHNICAL DATA

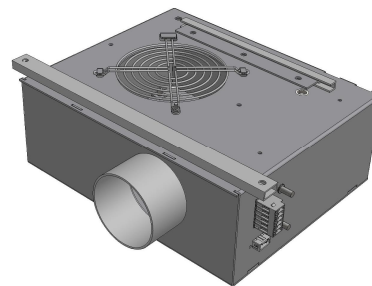
## DAN DRYER® BUILD-IN DRYER MODEL 142



**Dryer:** DAN DRYER® hand dryer.

**Housing:** 2 mm raw or powder-coated (white) aluminium plate.

Height excl. outlet nozzle: 246 mm  
Height incl. outlet nozzle: 293 mm  
Width: 297 mm  
Depth: 122 mm  
Outlet nozzle (outside): Ø 80 mm



**Build-in:** Air inlet to be held free. Minimum distance to wall: 10 mm.

**Outlet:** The outlet nozzle is meant for the mounting of a standard flexible aluminium hose. Such compressed flexible hose can be supplied.

**Air volume:** 72 l/sec measured at the outlet nozzle.  
A precondition for a high air volume is that the flexible hose is kept as short and as straight as possible to avoid loss of pressure.

**Motor:** 110 W radial fan motor with sealed ball bearings. Brushless. Humidity protected. Automatic thermal cut-out.

**Heating element:** 1500 W Chromium-nickel filament coil mounted in a non-inflammable cone. Automatic thermal cut-out.

**Timer:** Electronic timer unit to be activated through external IR sensor.

**IR sensor:** External IR sensor unit controlled by the timer is included with the dryer unit.

**Connections:** Power supply: 230 Volt, 50 Hz - through WAGO type connector.  
Connector for IR sensor: WAGO type connector.  
Insulation Class: Class I. - The machine may be earthed through WAGO connector or externally on two 6 mm threaded grounding studs.

**Functionality:** Upon activation, the machine will run until hands are removed again. Automatic stop after 3 min. of continuous use.

**Guarantee:** 300,000 cycles – or 5 years from date of invoice – whichever comes first.

**Weight:** Gross weight: 5.5 kg; net weight: 4.8 kg.

**Compliance:** EN 50155  
EN 50121-3-2:2001  
EN 61000-6-1:2005  
EN 61000-6-3:2006  
EN 61373:2010  
EN 45545-2:2013+A1:2015  
EN 45545-5:2013+A1:2015  
Shock and Vibration IEC 61373, cat. 1, class B:2010



### DAN DRYER A/S