



Hinged bar to be fixed to the wall with vertical swivel with roll holder. Length 800 mm. Stainless steel. Shiny finish.

#### Description

- Hinged support bar of vertical rotation to fix on the wall.
- Suitable for support in washbasins, wc-bidet, showers and bathtubs.
- Designed for toilets adapted for people with reduced mobility.
- Stainless steel gloss finish. Also available in satin finish (NOFER 15051.80.S), black (NOFER 15051.80.N), and white (NOFER 15051.80.W).

#### Suggested text for prescription

NOFER folding support bar, with vertical pivot, made of steel, glossy finish. With brake, roll holder and anti-conductive kit.  
Length: 800 mm. Tube bars Ø32 mm.

#### Components

- Steel hinged bar.
- With brake system.
- With roll holder. Also available without roll holder (NOFER 15051.SP.80.B)
- Stainless steel screws included.
- Anti-conductive kit included.

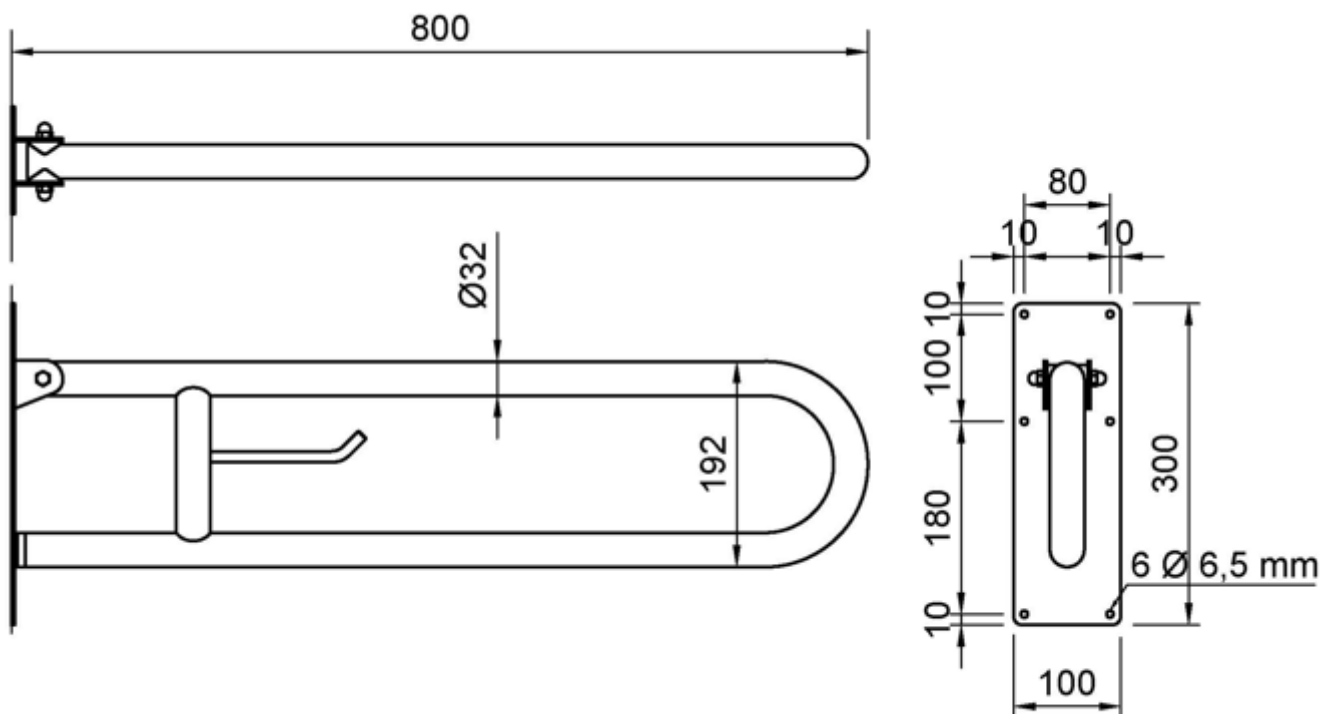
#### Technical characteristics

**Material:** AISI 304 stainless steel  
**Finishing:** Brightness  
**Bar diameter:** Ø32 mm  
**Bar length:** 800 mm  
**Anchor plate dimensions:** 300 high x 100 wide (mm)  
**Recommended installation height:** 70-75 cm top bar to floor

#### Maintenance

Stainless steel requires maintenance as dirt over time can damage the chromium (Cr) contained in stainless steel. We recommend a monthly cleaning with a specialized product for stainless steel.

#### Dimensional drawing



Ctra. Laureà Miró,  
385-387  
08980 | Sant  
Feliu de  
Llobregat,  
Barcelona - Spain  
T. +34 934 742  
423  
F. +34 934 743  
548  
nofer@nofer.com  
www.nofer.com  
www.nofer.com

RELATED  
PRODUCTS



15051.60.B



15051.60.F



15051.60.N

These specifications may be modified and/or amended due to manufacturing requirements.